

▶ Autonomous Underwater Vehicle Division

Operating proven, powerful and versatile AUV technology, MODUS provide cost effective AUV services to the oil and gas, renewables, telecommunications and hydrographic industries



AUV - REMUS-100

Modus' AUV team consists of highly experienced senior former Royal Navy AUV operators and former AUV OEM technical staff. The AUV team are supported by Modus' experienced projects and engineering personnel, bringing an extensive track record in offshore support operations.

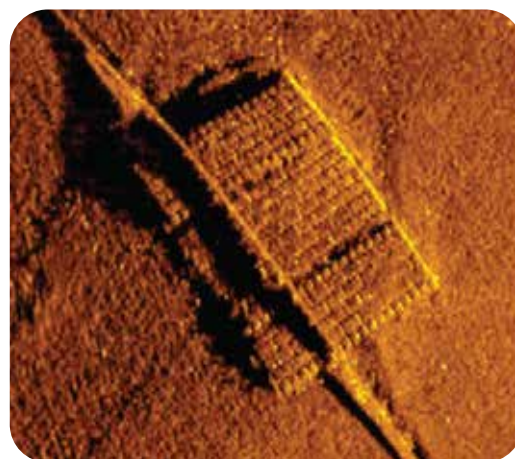
Versatile, lightweight and portable, the AUV spreads can be operated from a large range of support vessels and from shore sites with an array of navigation, sensor and power resources.

AUV survey and inspection capabilities:

- Coastal and non-tidal water
- Ports, harbours and critical infrastructure
- UXO support
- Route, scour and mattress surveys
- Seabed mapping and identification
- Debris field, wreck and archaeological mapping
- Environmental monitoring
- Search and rescue

Features:

- Lightweight and compact; 2 man portable
- Untethered and free swimming
- Coastal Seabed surveys down to 100m depth using high definition Side Scanning Sonar
- Sub metric measurements from sonar data
- Monochrome video footage of Contacts
- Typical area coverage of up to 0.25Km² per hour
- Onsite quick look sonar and video analysis
- Minimal logistics consideration
- Low environmental impact



General Specifications:

Vehicle diameter	19cm
Vehicle length	160cm
Weight in air	40kg
Operating depth	3m-100m
Operating speed	Up to 4.5kts
Standard sensors	Marine Sonics 900/1800kHz side scan sonar ADCP/DVL CT probe Optional monochrome video camera and lighting
Navigation	Long Base Line transponders Doppler-assisted dead reckoning GPS
Energy	1 kWh internally rechargeable lithium-ion
Endurance	>10 hours, speed and sensor dependant
Gateway buoy	Remote telemetry monitoring (line of sight)



Beaumont House, Beaumont Street,
Darlington, County Durham DL1 5RW United Kingdom
Tel: +44 (0)1325 387 480 Fax: +44 (0)1325 387 481
Email: enquiries@modus-ltd.com

MODUS
Seabed Intervention