

# AUV-1

## Technical Specification

AUV-1 is a Hydroid built Remus 100 AUV. Versatile, lightweight and man portable, AUV-1 can be operated from a large range of support vessels and from shore sites with an array of navigation, sensor and power resources. AUV-1 offers a low logistics solution for coastal seabed surveys down to 100m depth using high definition Side Scanning Sonar and monochrome video.

### AUV SURVEY AND INSPECTION CAPABILITIES

- Coastal and non-tidal water
- Ports, harbours and critical infrastructure
- UXO support
- Route, scour and mattress surveys
- Seabed mapping and identification
- Debris field, wreck and archaeological mapping
- Environmental monitoring
- Search and rescue

### FEATURES

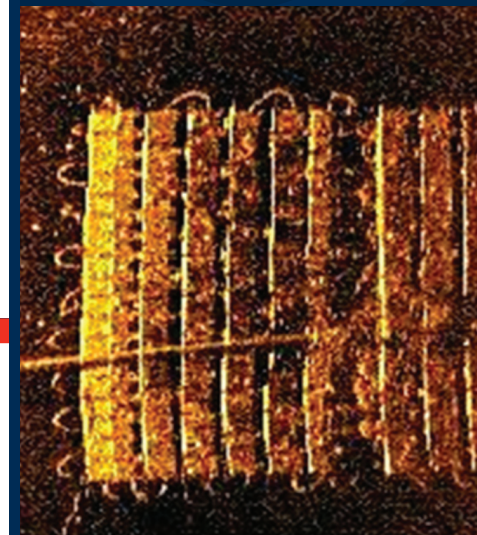
- Lightweight and compact; 2 man portable
- Untethered and free swimming
- Coastal Seabed surveys down to 100m depth using high definition Side Scanning Sonar
- Sub metric measurements from sonar data
- Monochrome video footage of contacts
- Typical area coverage of up to 0.25Km<sup>2</sup> per hour
- Onsite quick look sonar and video analysis
- Minimal logistics consideration
- Low environmental impact

### GENERAL SPECIFICATIONS

Vehicle diameter	19cm
Vehicle length	160cm
Weight in air	40kg
Operating depth	3m - 100m
Operating speed	Up to 4.5kts
Standard sensors	Marine Sonics 900/1800kHz side scan sonar ADCP/DVL CT probe Optional monochrome video camera and lighting
Navigation	Long Base Line transponders Doppler-assisted dead reckoning GPS
Energy	1 kWh internally rechargeable lithium-ion
Endurance	>10 hours, speed and sensor dependant
Gateway buoy	Remote telemetry monitoring (line of sight)



SMART  
SUBSEA  
SERVICES



Beaumont House, Beaumont Street, Darlington, County Durham, DL1 5RW, United Kingdom

Tel: +44 (0)1325 387 480 Email: [enquiries@modus-ltd.com](mailto:enquiries@modus-ltd.com)

Modus Ltd. accepts no responsibility for and disclaims all liability for any errors and/or omissions in this publication. Specification subject to change without notice. Feb 2019.

